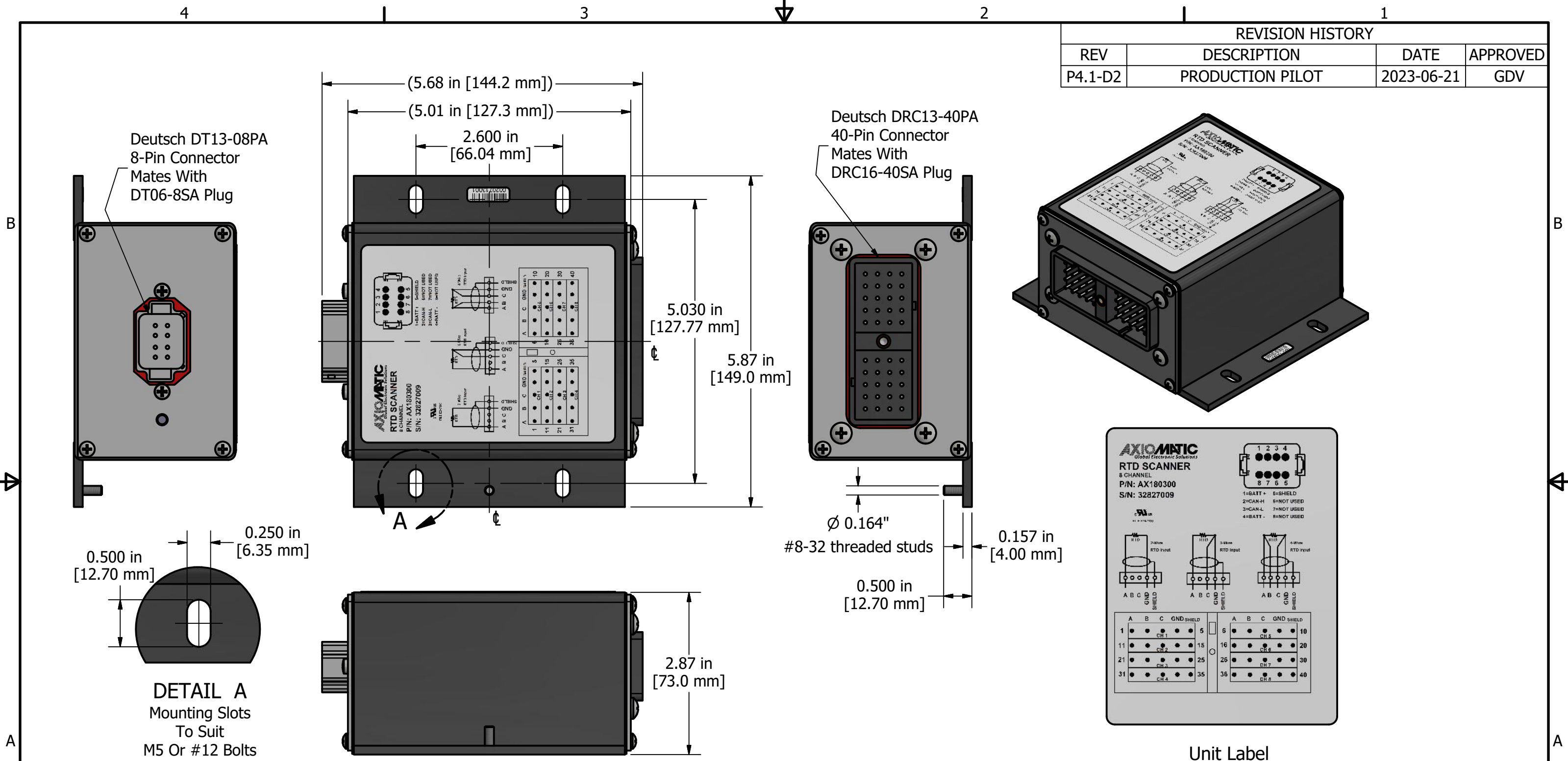


REVISION HISTORY			
REV	DESCRIPTION	DATE	APPROVED
P4.1-D2	PRODUCTION PILOT	2023-06-21	GDV



PROPRIETARY THE INFORMATION CONTAINED IN THIS DRAWING IS CONFIDENTIAL AND PROPRIETARY AND REMAINS THE EXCLUSIVE PROPERTY OF AXIOMATIC TECHNOLOGIES CORPORATION. THIS DRAWING MAY NOT BE USED, REPRODUCED IN WHOLE OR IN PART, NOR REVEALED TO OTHERS WITHOUT THE PRIOR WRITTEN CONSENT OF AXIOMATIC TECHNOLOGIES CORPORATION. BY ACCEPTANCE OF THIS DRAWING, THE BEARER AGREES TO THESE CONDITIONS.				AXIOMATIC TECHNOLOGIES CORPORATION 1445 COURTEYPARK DR E MISSISSAUGA, ON CANADA L5T 2E3 905-602-9270	
DIMENSIONS ARE IN INCHES [mm] UNLESS OTHERWISE SPECIFIED IN DRAWING TOLERANCE ON: X.XXX [.XX] ± 0.008 [0.20] X.XX [X.X] ± 0.02 [0.51] (X.XX [X.X]) ± 0.04 [1.00] ANGLES ± 1.0° Others follow ISO 2768-2, tolerance class K		MATERIAL: NA FINISH: NA THIRD ANGLE PROJECTION:	DRAWN: AZ CHECKED: TF APPROVED: GDV	DATE: 2020-10-15 DATE: 2020-10-16 DATE: 2020-10-16	TITLE: RTD SCANNER, 8-CHANNEL DWG REV: D2 DWG NO: AX180300-MD PART NO: AX180300 SCALE: 0.6
			INVENTOR: GDV SIZE: B	PART REV: P4. SHEET: 1 of 1	