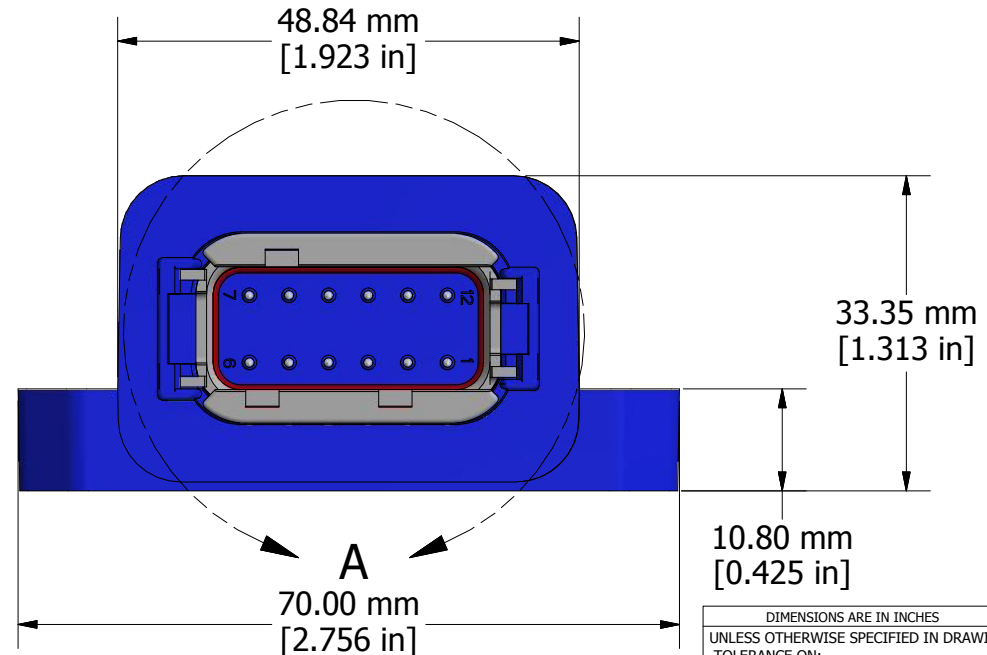


Molded in TE Deutsch receptacle DTM04-12PA, mates with DTM06-12SA.

connector pin assignment			
PIN	FUNCTION	PIN	FUNCTION
1	BATT -	7	CAN_L
2	TX +	8	DIN 2
3	RX +	9	DIN 1
4	DIN 3	10	RX -
5	DIN 4	11	TX -
6	CAN_H	12	BATT +



REVISION HISTORY			
REV	DESCRIPTION	DATE	APPROVED
P1-D1	PRODUCTION PILOT	03/09/2020	GDV
P1-D2	LABEL WAS UPDATED	04/06/2020	GDV



Unit Label



DIMENSIONS ARE IN INCHES UNLESS OTHERWISE SPECIFIED IN DRAWING TOLERANCE ON:		MATERIAL NA		DRAWN EL	DATE 3/9/2020	TITLE 4 Digital Inputs Controller SAE J1939, Ethernet				
FABRICATION X.XXX ± 0.015 X.XX ± 0.01 X.X ± 0.1 ANGLES ± 1.0		MACHINING X.XXX ± 0.005 X.XX ± 0.01 X.X ± 0.1 ANGLES ± 1.0		FINISH NA		CHECKED AZ	DATE 3/11/2020	DWG REV D2	DWG NO AX032150-MD	PART REV P1
		THIRD ANGLE PROJECTION		INVENTOR GDV	DATE 3/11/2020	SCALE 1.25	PART NO AX032150	SHEET 1 of 1		

PROPRIETARY
 THE INFORMATION CONTAINED IN THIS DRAWING IS CONFIDENTIAL AND PROPRIETARY AND REMAINS THE EXCLUSIVE PROPERTY OF AXIOMATIC TECHNOLOGIES CORPORATION. THIS DRAWING MAY NOT BE USED, REPRODUCED IN WHOLE OR IN PART, NOR REVEALED TO OTHERS WITHOUT THE PRIOR WRITTEN CONSENT OF AXIOMATIC TECHNOLOGIES CORPORATION. BY ACCEPTANCE OF THIS DRAWING, THE BEARER AGREES TO THESE CONDITIONS.

AXIOMATIC TECHNOLOGIES CORPORATION
 5915 WALLACE ST.
 MISSISSAUGA, ON
 CANADA L4Z 1Z8
 905-602-9270